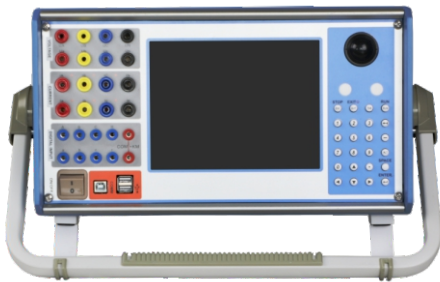


## VAE-1200 Protection Relay Tester

6-phase current(6×30A) + 6-phase voltage(6×120V) output

The VAE-1200 is economical 6-phase protection relay tester, which outputs 6-phase current(6×30A) & 6-phase voltage(6×120V) for testing conventional protection relays. The embedded industrial PC with 8" LCD screen, keyboard and trackball mouse are adopted to make VAE-1200 run without a PC. It is also available to connect VAE-1200 to PC for completing various tests.

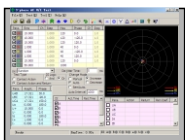


- Cost-effective 6-phase relay tester
- 6-phase current(6×30A)
- 6-phase voltage(6×120V)
- Embedded industrial PC with 8" LCD screen
- Both local test and PC remote test available
- High reliability linear amplifier
- Abundant test modules

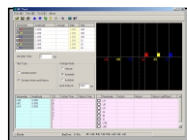


### ■ In-built applications

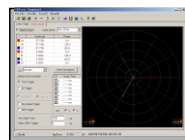
#### Current testing group



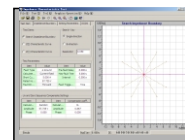
AC Injection



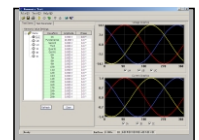
DC Injection



State Series

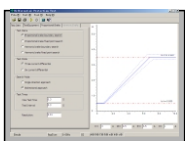


Impedance  
Characteristic

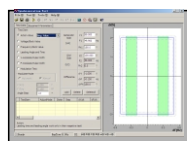


Harmonic

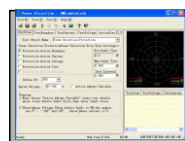
#### Protection relay test applications



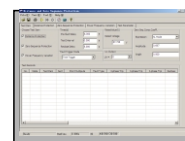
Differential



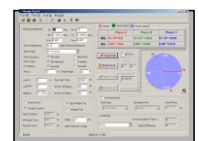
Synchronization



Power Direction  
Impedance



Distance  
Zero Sequence



Full Group

## Technical Parameter

### AC Current outputs

Control	Independent amplitude, frequency and phase angle
Range	6×30A/3×60A / 1×180A
Accuracy	0.2%
Output power	6×300VA at 30A 3×450VA at 60A 1×1000VA at 180A
Indication	Overload, distortion, etc.

### AC Voltage outputs

Control	Independent amplitude, frequency and phase angle
Range	6×120V/3×240V
Accuracy	0.2%
Output power	6×80VA at 120V 3×100VA at 240V

### Frequency

Range	DC, 0.001Hz~1000Hz
Accuracy	<1mHz(0~65Hz) <10mHz(0~450Hz) <20mHz(450~1000Hz)
Resolution	0.01Hz
Characteristic	2 -20 times harmonic

### Phase angle

Range	-360°~+360°
Accuracy	0.1°
Resolution	0.1°

### DC current outputs

Range	6×±10A(70VA max. at 10A)
Accuracy	0.5%

### DC voltage outputs

Range	6×±160V(70VA max. at 160V)
Accuracy	0.5%

### Auxiliary DC Supply

Voltage Range	110V/220V(max.1.5A)
Power	max.165VA/330VA

### Binary inputs

Number	8
characteristics	idle contact or free contact
Threshold	“0”:0~6V; “1”:11V~250V
Measuring time	0.1ms~9999s
Time accuracy	0.1ms

### Binary outputs

Number	8
Type	idle contact
Break capacity	AC/0.5A; DC/0.2A

### Power Supply

Voltage	AC230V/120V Customized
Frequency	50/60 Hz
Rated current	10A at 230V / 12A at 115V
Connection	Standard AC socket (IEC 60320)

### Environmental

Operation Temp.	0 to +50 °C (+32 to +122 °F)
Storage Temp.	-25 to +70 °C (-13 to +158 °F)
Humidity range	5 to 95 %
Vibration	Meet IEC 60068-2-6

### Miscellaneous

Weight	19.7kg(43.43 lb)
Dimensions	470×550×280mm(W/H/D)
Connection	2 USB, 1 serial port